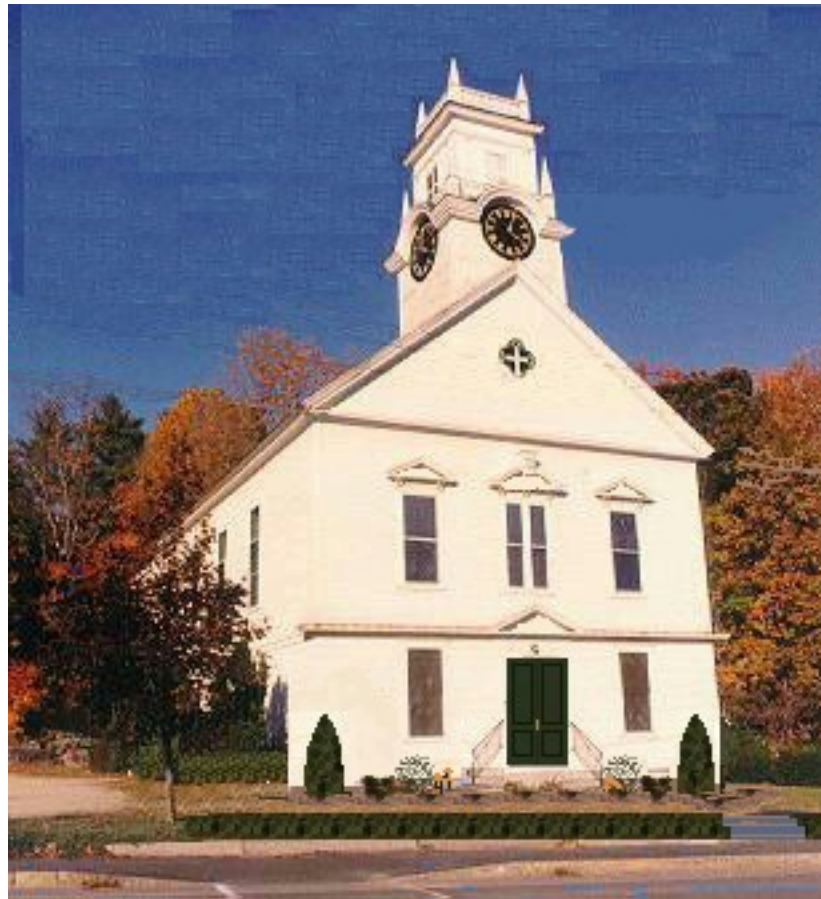


# BROOKLINE COMMUNITY CHURCH ANNUAL MEETING

**Sunday, February 10<sup>th</sup>, 2008 - 11:45 A.M.**



**The Reverend Dr. David W. Smith, Minister**

## ANNUAL MEETING 2007

AGENDA	3
MINUTES: 2007 ANNUAL MEETING	4
CLERKS STATISTICAL REPORT	6
MINISTERS REPORT	7
REPORTS OF BOARDS AND COMMITTEES	
OUTREACH	8
DIACONATE	9
LANDSCAPING COMMITTEE	10
TREASURER	11
STEWARDSHIP	15
CHRISTIAN EDUCATION	16
AUDITORS REPORT	--
PASTORAL RELATIONS	--
FINANCE & PROPERTY	--
TRUSTEES	--
PROPOSALS	20
COMMITTEES	24-26
CHURCH ATTENDANCE	27-28
BUDGET	Appendix

# AGENDA

Call to Order

Moderator

Opening Prayer

Rev. David W. Smith

Discussion on Minutes of Annual Meeting, 2007

Presentation of Reports

- Outreach
- Diaconate
- Landscaping Committee
- Treasurer
- Stewardship
- Christian Education
- *Auditor*
- *Pastoral Relations*
- *Finance & Property*
- *Trustees*

Presentation of Proposals

- Motion for continued sponsorship of Cub Scout Pack 260
- Nominating Committee
- Fin. & Property Budget for 2008

New Business

Closing Remarks

Rev. David W. Smith

Adjournment

**Note :** *Reports listed above in italics will be given verbally*

# MINUTES:ANNUAL GENERAL MEETING

## FEBRUARY 11, 2007

Based on average Sunday attendance, a quorum of 26 was required by our constitution.

The meeting, with 30 members present, was opened at 11.45 a.m. with a prayer by Rev. Smith.

### **2006 Minutes:**

Question raised as to whether proposals for clock repair had been received. Clarence Farwell indicated that the only reply had been from a company in Maine that had submitted a \$12k proposal for 'evaluation'

Motion to accept the 2006 minutes by Linda Saari, 2<sup>nd</sup> by Bruce Garvin. There was a unanimous vote in the affirmative.

### **Reports:**

- The moderator indicated that the meeting should go through all reports, engage in discussion as needed, and then vote on all reports together.
- The Clerks Report should include Confirmations.
- In the Ministers report, viability of a 2<sup>nd</sup> service has not yet been evaluated
- The Trustees verbal report indicated that 2 major projects are ongoing, namely the Steeple, and at the parsonage – the barn roof and painting
- Spelling errors in the stewardship report were pointed out.
- Motion to accept all reports by Bruce Garvin, 2<sup>nd</sup> by Amy Fessenden.

There was a unanimous vote in the affirmative.

### **Proposals:**

The proposed Budget was presented and generated discussion and questions:

- Fuel contract
- Clock – can carillon 'mimic' the bell?

- The Ministers “books allowance” has been reduced to \$100. It was unanimously voted to reinstate \$200
- Study hymnal acquisition for next year
- Trust interest is for 4 quarters

Motion to accept amended budget passed unanimously.

**Nominating Committee:**

- A partially complete slate of nominations was presented.
- Discussion re: Board of Pastoral Relations has not met, and apparently has not been missed. The moderator noted that this Board is in the Constitution, and the Appendix to the Constitution is where its responsibilities are defined
- Peter Cook is to be added to BPR (2008 position).
- Melanie Levesque is to be added to BPR (2009 position)
- Amy Fessenden is to be added to Stewards (2009 position)
- Linda Ashton is to be added to Outreach
- Christine Clement is to be given Cradle Roll role

Motion to accept all nominations by Rena Dunklee, 2<sup>nd</sup> by Bob Ashton

There was a unanimous vote in the affirmative

**Other Business:**

- Discussion re: Youth Minister
- Youth Group is meeting with the Souhegan Youth Group

Rev. Smith thanked all for attending

The meeting was adjourned at 12.50 pm.

# CLERKS STATISTICAL REPORT 2007

## BAPTISMS

January 6	Grover Cleveland Farwell, IV
October 14	Brendon Michael Thibault
October 27	Evelyn Mary Clements
October 28	Mercedes Isabelle Gavin
November 11	Sean Neville McGarry

## FUNERALS

February 3	Helen Carner Fenske
February 3	Jay E. Irwin
October 27	Nancy B. Howard
November 17	Faye Gould

## MARRIAGES

May 12	Jayme Dupont	Charles Goulet
May 27	Patricia Howard	Douglas Barnett
September 8	Llaliana Marble	Shuvom Ghose
September 22	Jessica Corey	J. P. Royea
November 9	Marcalyn Breda	Travis Kinney

## MEMBERS RECEIVED

April 29	Jayme Dupont
April 29	Charles Goulet
April 29	Lisa and Matthew Linder
April 29	Heather and Steve Martinos
April 29	Anita and Ron Merryman
April 29	Rebecca and Tad Putney
*September 23	Laura Desrochers
*September 23	Brett Ferrell
*September 23	Dylan King
*September 23	Kurt Thompson

\* Confirmation

# ANNUAL REPORT OF THE MINISTER

Too quickly time passes – and I am told when it seems like it is passing too quickly – life both personal and in our work, is going quite well. I hope so.

It has been, I believe a year of comfortable growth and of continued building of a more solid and material foundation.

The attendance in church is good, meetings are quite well attended, fellowship activities are enjoyed and we all seem to enjoy each others company.

We are here to serve God, each other, and the larger community, and world. Hopefully, through Christian education, worship, and Bible study (more always welcome) we continue the search into the spiritual dimensions of life.

We are here to serve the larger church and the community. Our ties with the United Church of Christ and the United Methodist Church can always be stronger but our ties with the local and regional mission projects and the many folks of the community enjoying our fine facility cannot be in better shape.

The past year has seen many baptisms, weddings and funerals. Also many people from near and far continue to join our church. The material and spiritual statistics continue to be encouraging.

However in a church the potential is always greater than the reality. We are now the only organized Christian community in Brookline. Some people go out of town to another church and many do not attend any religious group at all. Therefore there is the potential that we could be filled to capacity once or twice each Sunday morning and our Christian Education activities and all other activities could be very well attended.

So that is our opportunity and our challenge – to bring the Good News to all the people. May it be so during the year of our lord 2008 and all the years beyond.

Sincerely – Yours in His Service – Rev. Dr. David W. Smith

# BOARD OF OUTREACH

The Outreach Committee had a productive year working on new projects as well as reaching out financially by giving to designated charities locally and regionally.

Our Board benefited by receiving a share of the Ella Anderson Grant. We used these funds to launch our Senior Luncheon Program in May with subsequent luncheons in June, October and December. With these monies and other funds, we purchased a new electric stove, all-refrigerator and commercial dishwasher for the church kitchen. In addition, we acquired other needed kitchen items to use for these and future luncheons. We served full-course dinners to an average of 45-50 seniors from our community at each luncheon and will continue this successful “outreach” to the seniors in town in the coming year.

In May we held an Appreciation Luncheon (along with the Deacons) recognizing the hard work and dedication of all church members who volunteer their time and talents during the year.

Along with Outreach funds and the generosity of church members, we were able to donate sheets, pillowcases, towels, pots and pans and utensils to Buckingham Place, housing for veterans in Nashua, prior to their opening.

We “adopted” three families for Christmas through SHARE in Milford. The congregation responded generously with gifts and gift certificates and helped us provide a very Merry Christmas for those families. In addition, we worked with outgoing welfare officer, Noreen Crooker, and provided complete dinners and gifts for families in need in Brookline.

On an ongoing basis, we collect for SHARE during the year and provide food, paper goods, and personal hygiene products, as well as collect clothing for the Clothing Barn in Milford. Outreach also arranges rides to doctor’s appointments, provides meals when needed and a “helping hand” when called upon.

Outreach, on behalf of the church, supported a number of diverse and very worthwhile organizations during 2007.

Marguerite’s Place	St. Patrick’s SHARE Program
Nashua Soup Kitchen	Home, Health and Hospice
Bridges	Wycliffe Bible Mission
Wounded Warrior Project	Disciple Makers
His Mansion	Veterans FIRST
UMC Missions	UCC Missions
Local families in need	Habitat for Humanity (Nashua)
NH Flood victims	Buckingham Place, Nashua (housing for veterans)

## 2007 Outreach Committee:

Nancy Dulac	Sandy Garvin	Jackie Knowles	Jennifer Wylie
Nancy Dunbar	Sue Haight	Ethel Long	

# DIACONATE

During the 2007 year the Board of Deacons

- Assisted with the service at the Cathedral of the Pines in July
- Assisted in the preparations for Holy Week, Easter service, Advent and Christmas services
- Participated in baptisms
- Decorated the sanctuary for each season and decorated the church for the Advent season
- Provided acolyte training
- Provided an attendant for the nursery room to allow parents to stay in the sanctuary for the service
- Video tape the Sunday services for broadcast over the local cable station
- Provided a delicious breakfast during the Treasures of Brookline
- Continued the practice of having the PIN envelopes in the pews during communion Sundays
- Oversaw and printed the prayer list
- Purchased new hymnals

We look forward to continuing our work with Rev. Smith, the church family, and the community in 2007. We extend our heartfelt appreciation to all members of the congregation who helped fill vital positions every Sunday as lay readers, acolytes, greeters, ushers, children story presenters, and coffee hour hosts through out the year.

Respectfully submitted,  
Barbara Haskell-Higgins, Chair

Board of Deacons:

Art Fenske  
Allison Ferrell  
Amy Fessenden  
Vicki Goodwin  
Russell Haight  
Barbara Haskell-Higgins  
Todd Miller

Junior deacons:  
Laura Desrochers  
Erin Saari

## LANDSCAPING COMMITTEE

In April 2003, the Church of Christ formally formed a Landscape Committee. This committee was charged with addressing the landscaping at the Church especially with regard to the front of the Church and the new sculpture on the East side of the Church, and the paving of the parking lot.

The majority of the work has been finished. The street trees, Crimson King Maples, are doing well. We continue to treat them each spring with BT to ward off the Gypsy Moth Caterpillars

Our memorial Magnolia tree given in Memory of Sid Hall continues to grow and flower each spring. The daffodils that were donated by Art and Helen Fenske continue to give us a burst of color to announce that spring has arrived.

Trustee, Clarence Farwell has taken over the final work on the brick path and will hopefully finish up this spring (2008). There is still time to purchase a "MEMORIAL BRICK" to be included in the path.

Judy and Peter Cook continue to have the lawn mowed and fertilized and sponsor staff from Camp Tevya to weed on their days off.

All that remains is to finish the mulch at the end of the parking lot and around the tool shed, a project that was not completed in 2007. A Project book is being compiled which will include future projects (east side of the church) that can be funded through donations.

Respectfully Submitted  
Judy Cook, Chairperson

Landscaping Committee

Judy Cook  
Art Fenske  
Sandra Garvin  
Sue Laub  
Monica Rencken  
Trish Thompson

# TREASURER

Reports showing monthly detail are published each month and are available if required. The following show complete year (2007) totals.

## Brookline Church of Christ Receipts - 2007

DESCRIPTION	Budgeted Receipts	Actual Receipts
Pledges	\$59,750.00	\$57,901.00
Unpledged regular givers	\$6,000.00	\$8,685.00
Pledges from prev. yr. pd. in 2006	\$535.00	\$845.00
Loose Collections & Donations	\$3,753.00	\$4,042.88
Sunday School	\$450.00	\$443.45
Building Rental	\$720.00	\$1,096.00
<b>INCOME FROM TRUSTS</b>		
Brookline General Fund	\$0.00	\$571.46
Ellen S Swett (Trustees use)	\$0.00	\$36.17
Shedd	\$0.00	\$20.28
*James H Hall (Gospel of Church)	\$0.00	\$1,042.26
*E C Jensen (Interest only)	\$0.00	\$39.97
* Frances A Peterson (Int. preaching)	\$0.00	\$1,563.39
*Emily E Stickney (Interest only)	\$0.00	\$176.60
*James N Tucker (Int. for preaching)	\$0.00	\$521.14
*Wm & Lorraine Dubbin	\$0.00	\$2,184.38
Subtotal: Income from trusts	\$5,256.00	\$6,155.65
Interest on Savings & Checking	\$500.00	\$614.78
<b>SPECIAL EVENTS</b>		
Bingo	\$12,600.00	\$13,000.00
Game Dinner	\$1,800.00	\$2,447.20
Suppers	\$452.00	\$546.00
Easter & Christmas Collection	\$3,000.00	\$2,264.00
Treasures of Brookline	\$1,000.00	-\$80.00
Raffle - Boat		\$145.00
Raffle - Afghan		\$101.00
Cookbooks		\$125.00
<b>Totals:</b>	<b>\$95,816.00</b>	<b>\$98,331.96</b>

## Brookline Church of Christ Expenses - 2007

DESCRIPTION	Budgeted Expenses	Actual Expenses
<b>Salaries</b>		
Minister - Sal. & SS	\$30,624.00	\$30,328.36
Organist	\$4,056.00	\$3,873.08
Choir Director	\$1,256.00	\$922.63
Secretary	\$2,356.00	\$2,410.19
Bookkeeper	\$1,256.00	\$1,284.89
C E Director	\$7,156.00	\$7,320.59
D. Smith - Retirement		\$1,000.00
<b>Benefits &amp; Expenses</b>		
Pastor - Retirement	\$5,122.00	\$5,096.00
Pastor - Health & Dental Ins	\$6,350.00	\$6,345.00
Pastor - Continuing Ed.	\$400.00	\$285.00
Pastor - Books / Periodicals	\$200.00	\$126.05
Pastor - Car Expenses	\$2,800.00	\$2,800.00
<b>Insurance</b>		
Worker's Compensation	\$417.00	\$415.32
Fire/Liability	\$3,000.00	\$3,121.00
<b>Maintenance &amp; Supplies</b>		
Church		
Fuel Oil	\$4,500.00	\$2,031.41
Electricity	\$3,000.00	\$2,649.82
Propane	\$500.00	\$961.96
Telephone	\$550.00	\$501.96
Supplies & Maintenance	\$1,500.00	\$1,964.07
Janitorial	\$2,940.00	\$3,221.63
Clock Insp. ./ Maint.	\$200.00	\$200.00
Elev. Insp. / Maint.	\$250.00	\$0.00
Elevator Phone	\$378.00	\$387.15
Church Grounds	\$500.00	\$0.00
<b>Parsonage</b>		
Fuel Oil	\$1,500.00	\$1,529.53
Electricity	\$1,300.00	\$1,281.49
Propane	\$70.00	\$57.96
Telephone	\$250.00	\$240.00
Maintenance/Repairs	\$2,000.00	\$1,337.60
<b>Administrative</b>		
Copier Maintenance	\$633.00	\$633.00
Bulletin Covers	\$300.00	\$173.80
Postage	\$400.00	\$441.19
Office Supplies	\$1,906.00	\$1,175.74

Internet Service	\$649.00	\$795.91
<b>Conference Dues</b>		
Dues - UCC	\$500.00	\$500.00
Dues - UMC	\$500.00	\$500.00
<b>Christian Education</b>		
Children	\$1,000.00	\$1,096.65
Youth	\$150.00	\$28.56
Adult	\$200.00	\$231.39
Vacation Bible School	\$975.00	\$919.84
Cradle	\$120.00	\$100.80
<b>Diaconate</b>		
Sanctuary	\$450.00	\$87.45
Music	\$200.00	\$0.00
Delegate Expenses	\$325.00	\$257.25
Supply Minister	\$300.00	\$0.00
<b>Outreach</b>		
Missions	\$5,000.00	\$5,000.00
<b>Stewardship</b>	\$200.00	\$19.24
<b>Totals:</b>	<b>\$98,239.00</b>	<b>\$93,653.51</b>

## Brookline Church of Christ Dedicated Funds - 2007

DESCRIPTION	1/1/07 Bal.	12/31/07 Bal.
*C.E. Children w/ Challenge/supplies	\$3,814.18	\$3,101.27
*Memorial - Grace Thompson- camp	\$115.00	\$115.00
*Brick Walkway	\$733.72	\$790.72
*Jr & Sr Youth Group Fund	\$623.84	\$601.35
*Flower Fund	\$553.49	\$670.09
*PIN / Diaconate Fund	\$1,881.16	\$1,613.18
Bowe Memorial Fund	\$16,394.62	\$16,394.62
DESCRIPTION	1/1/07 Bal.	12/31/07 Bal.
Ella Anderson Fund	\$1,163.06	\$0
*E.Anderson Grant-classroom doors	\$0.00	\$1,375.00
*E.Anderson Grant-book shelves	\$0.00	\$300.01
*E.Anderson Grant-Bibles	\$0.00	\$475.00
*Ella Anderson Fund - Sr.	\$0.00	\$0.00

Lunches		
*Outreach	\$1,662.00	\$1,464.43
*Cook Estate, Dottie - Church		
Bldgs.	\$15,530.06	\$6,312.63
*Memorial - Midge Chandler	\$3,685.00	\$1,035.59
*Church Sign		\$200.00
*Memorial - Helen Fenske		\$50.00
*OGHS		\$0.00
*Confirmation - Iraq		\$0.00
*Group Workcamp		\$1,031.92
*Neighbors In Need		\$0.00
<b>Dedicated Funds</b>	<b>\$46,156.13</b>	<b>\$35,530.81</b>

## BUDGET RECAPITULATION 2007

Year Totals

Church Receipts	\$98,331.96
Church Expenses	-\$93,653.51
Dedicated Funds	-\$10,625.32
<b>TOTAL:</b>	<b>-\$5,946.87</b>

### DEPOSITS 2007

1-1-2007 Bal.

12-31-2007 Bal.

Checking Account Balance	\$21,026.00	\$14,488.01
Money Market Account	\$14,447.66	\$14,520.07
Certificate of Deposit	\$10,682.47	\$11,201.18
<b>TOTAL DEPOSITS:</b>	<b>\$46,156.13</b>	<b>\$40,209.26</b>

# BOARD OF STEWARDS

Stewardship met in conjunction with Board of Finance on the second Tuesday of each month, except when holidays conflicted. We ask that each church send a representative to these monthly meetings.

Once again the Neighborhood Express Bags were used for our annual campaign. The bags were distributed in early November with pledge cards returned totaling \$58,320.00, about a 25% decrease from last year.

The Stewardship Committee is responsible for implementing programs for soliciting monies and coordinating various fundraisers for the church to ensure the most benefit from each activity. We would ask the congregation that fundraising activities pass through the committee before implementation.

We wish to thank those individuals who dedicated their time and talent to the success of all our activities.

David Smith  
Ann Descrochers  
Rena Duncklee  
Bruce Garvin  
Russell Haight  
Chris Hegarty  
Betty Hall  
Outreach

Respectfully submitted  
Amy Fessenden

# BOARD OF CHRISTIAN EDUCATION

The Board of Christian Education is responsible for providing a diverse set of learning experiences based on the teachings of Jesus Christ. To ensure these programs meet the needs of the congregation we once again gathered input via an informal brainstorming session held over the summer. As a result of that session: the January Rotation Unit will be continued and in 2008 has been revised to be intergenerational; we will continue to offer communion earlier in the service so teachers / students may partake; we will maintain publication of the Educational Ministries Booklet; Acolyte training was provided during Sunday school class time to reach more children; adult education was moved to Saturday evenings; more Old Testament stories were added to the curriculum; and we are working on some resources to assist our youth in understanding what the Bible says about murder or dealing with those who murder, especially in the context of war / terrorism and law enforcement.

Specifically, during 2007 the CE Board delivered the following programs:

## **Sunday School Program**

The 2006-2007 Sunday School year concluded in May with an intergenerational service dedicated to the theme "Make a Joyful Noise unto the Lord". The older children provided their incredibly insightful interpretation of the Ten Commandments, while the younger classes expressed their praise through prose, song and skits. During the service seven second graders and two new church members were honored with the presentation of Bibles; and five children received attendance awards.

The Pre-school, Beginner and now Primary classes (Pre-school – Grade 4) are using *The Worship Center* curriculum. This Montessori based method of learning encourages children to participate in a class structured like a worship service. The children are encouraged to become active participants in discovering the purpose and meaning of faith through oral storytelling and exploration.

The Middler Class (Grades 5-6) is using the lectionary based *Living the Good News* curriculum. The lessons taught in the Sunday school class are based on the same scripture passages used in the worship service. This encourages dialogue between parents, other adults and the children as they have explored the same material in different ways.

In addition to our weekly Sunday school classes we held a special evening session in March to help the children (and adults) better understand the events of Holy Week.

In December we rejoiced by retelling the story of our Savior's birth through our annual pageant. Under the guidance of Linda and Erin Saari the children presented *No Room at the Inn*. The play was followed by a light supper and our traditional carol sing.

## **Vacation Bible School (VBS)**

A five day VBS program was offered during the mornings of June 24 through June 28. For the third year, the opening day was held during Sunday morning worship to share some of this experience with the congregation. 50 children from our community attended the SonForce Kids VBS program.

The church was transformed into a hi-tech command center, the SonForce headquarters, where the children set out on their mission to grow in their understanding of what it means to serve God with courage. In addition to songs, skits, crafts, games, Bible stories and snacks, the children learned to serve others via a mission project in support of Nashua Children's Home.

## **Administration**

The Educational Ministries booklet was updated for the 2007-2008 "school year" and distributed to families early in the fall.

This year pre-printed student information forms were available for children previously enrolled in Sunday school facilitating a smoother registration process. There was an emphasis on accurate record keeping for attendance, student health/special needs and Safe Church policies. The administrator also assumed the task of recording/distributing meeting minutes.

## **Adult Education**

Rev. Dr. David W. Smith continued to facilitate two programs in the area of adult education. The Wednesday morning group met at the parsonage and followed their bible study with a light lunch. Throughout the course of the year they completed their study of homosexuality in religion/the Bible and started a study of the New Testament. The Monday evening group met at the church and completed their study of the "The Religions Next Door" and then began to focus on the Book of Job.

Under the direction of Lyndon Marble the Adult Sunday School Program continued meeting before church each week until mid year. The primary focus of the program in the winter and spring of 2007 was to study the Book of Acts. In the fall we transitioned to a Saturday evening Bible Study program covering the topics of "The Historical Accuracy of the Bible", "Are There Errors in the Bible?" and "The Meaning of Christmas". At this time, the Saturday evening format seems to be the "best fit" for members of our congregation and will be continued in 2008.

## **Youth Programs**

Religious instruction for youth in Grades 7-12 is offered during Sunday morning worship each week, with the exception of Communion Sundays and Intergenerational Worship when the Youth are encouraged to be active participants in the worship service.

This was a year of transitions and challenges for our youth group. In the winter and spring of 2007 we continued to meet jointly with the Souhegan Congregational Church Youth Group. During that timeframe there was regular participation from five

youth and three advisors representing the Brookline Community Church. Both churches are very committed to community service and as a result have decided to participate in a mission trip to Richwood, West Virginia in the summer of 2008. Much of our activity together has focused on increasing our awareness of those in need and on fundraising for our mission trip.

In the fall of 2007 we decided to implement a new Youth Group program focusing primarily on youth within our own congregation and meeting twice a month – once for fellowship and fun and once for community service. Participation in the fellowship activities has been very low. However, our community service and fundraising activities have been most successful.

Events from 2007 included:

- February – Overnight Mission trip to NYC with YSOP
- June – Yard Sale (in the rain)\*
- June – “Step Up” Pool Party
- September – Yard Sale at Treasures of Brookline\*
- October – Sightseeing trip to Cambridge, MA & serving at Fishes & Loaves Soup Kitchen
- November – Weekend trip to His Mansion (postponed)
- November – Ice Skating at Conway Arena in Nashua
- December – Soup and Chili Supper after the town tree lighting\*
- December – Yankee Swap Christmas party!

\* Funds to be used for the Mission Trip to West Virginia

### **Library**

Continued improvements to the library this year include the purchase of new materials and reorganizing some of the shelves in an effort to make things easier to find. Among the new additions to our collection are GuidePost, several children’s books on Easter; several books by Josh McDowell, and The Chronicles of Narnia book set.

### **Cradle Roll**

The Cradle Roll continues to be active with new members being added as families join the church or a child is baptized. Our paperwork has been updated to include all required information in our records so that the Baptism Certificate meets all legal requirements. Children reaching the appropriate age receive letters inviting them to attend Sunday school. All children on the Cradle Roll receive Birthday, Easter and Christmas cards during the year, as well as the faith development mailings.

### **Intergenerational Worship**

Our church philosophy is to encourage children to actively participate in worship -- both with the children's story each week and several intergenerational services during the year. Intergenerational services in 2007 included Boy Scout Sunday in February, school vacation weeks in February and April, our “End of Year” Celebration in May, Teacher Dedication Sunday in September, a Thanksgiving

weekend service to dedicate the new hymnals, Christmas and New Year's weekend services. All these times of worship include additional hymns and intergenerational activities.

### **Confirmation**

In February of 2007 four teenagers and their mentors embarked on an intense faith journey as part of the Making Disciples Confirmation Program. The program was designed to help the teenager explore their personal faith, to develop a significant relationship with a person in our church who is committed to Christ (their mentor), to ask questions, to develop a relationship with God and gain a deeper sense of commitment to the church. As part of this journey we had an opportunity to visit a Greek Orthodox Church, a United Methodist Church, and a local funeral home; to observe Church Board meetings; to create and send care packages to those serving overseas; and participate in two weekend retreats. The class culminated in a special worship service in September where all the participants shared their Confirmation experience with the congregation.

The Board of Christian Education would like to acknowledge and thank all those who volunteer to teach and help each week in our Sunday school classes and with youth activities. None of this would be possible without your continuous contributions and support.

Respectfully Submitted,

Ann Desrochers, Director of Christian Education  
Lyndon Marble, Adult Area Coordinator  
Joyce Hegarty, Youth Area Coordinator  
Ann Desrochers, Joyce Hegarty, and Llalanía Marble, Youth Fellowship Advisors  
Lynne Ouellette, VBS Director  
Amy Razzaboni / Karen Buretta, Administrator  
Christine Clements, Cradle Roll  
Howard Clements / Chris Spader, Librarian  
Linda Saari, Intergenerational Worship  
David Hoffman / Rhonda Lockwood, Member at Large  
Rev. Dr. David W. Smith

January 11, 2008

AUDITOR

BOARD OF PASTORAL RELATIONS

FINANCE AND PROPERTY

BOARD OF TRUSTEES

PROPOSALS

- **MOTION FOR CONTINUED SPONSORSHIP OF CUB SCOUT PACK 260**

Motion for continued sponsorship of Brookline Cub Scouts  
Our current sponsorship of Brookline Cub Scout Pack 260 ends Dec 31 2008

As per the Church Constitution **Section 4 – General Provisions**

**Sponsorship of Organizations by the Church**

Any organizations or group seeking to be sponsored by the Church of Christ dba Brookline Community Church of Brookline must agree that all persons, without regard to race, color, national origin, status, sexual orientation or economic condition, shall be eligible to for membership in its organization and, to participate in its programs.

An exception may only be made at the Annual meeting or a duly called Special Meeting, and must pass by a 2/3 vote in the affirmative.

This exception may be for a time limit of up to 5 years and then must be reviewed and voted upon again at the Annual Meeting 1 year before the expiration date.

However if unusual circumstances arise a duly notified Special Meeting may be called by the Cabinet to cancel or modify the exception immediately

**Motion for Annual Meeting**

To continue the sponsorship, of the Brookline Cub Scout Pack 260, for a period of 5 years until Dec 31, 2014, By the Brookline Community Church (Church of Christ).

Renewal of sponsorship to be voted again at the Annual meeting held in Jan or Feb of 2014.

**Recommended for approval by the Cabinet.**

- **NOMINATING COMMITTEE – Article 7 Boards of the Church. Removal of all references to Nominating Committee.**

**Recommended for approval by the Cabinet.**

- **MOTION FOR CONTINUED SPONSORSHIP OF CUB SCOUT PACK 260**

Motion for continued sponsorship of Brookline Cub Scouts  
Our current sponsorship of Brookline Cub Scout Pack 260 ends Dec 31 2008

As per the Church Constitution **Section 4 – General Provisions**

**Sponsorship of Organizations by the Church**

Any organizations or group seeking to be sponsored by the Church of Christ dba Brookline Community Church of Brookline must agree that all persons, without regard to race, color, national origin, status, sexual orientation or economic condition, shall be eligible to for membership in its organization and, to participate in its programs.

An exception may only be made at the Annual meeting or a duly called Special Meeting, and must pass by a 2/3 vote in the affirmative.

This exception may be for a time limit of up to 5 years and then must be reviewed and voted upon again at the Annual Meeting 1 year before the expiration date.

However if unusual circumstances arise a duly notified Special Meeting may be called by the Cabinet to cancel or modify the exception immediately

**Motion for Annual Meeting**

To continue the sponsorship, of the Brookline Cub Scout Pack 260, for a period of 5 years until Dec 31, 2014, By the Brookline Community Church (Church of Christ).

Renewal of sponsorship to be voted again at the Annual meeting held in Jan or Feb of 2014.

**Recommended for approval by the Cabinet.**

- **NOMINATING COMMITTEE – Article 7 Boards of the Church. Removal of all references to Nominating Committee.**

**Recommended for approval by the Cabinet.**

**ARTICLE VII – BOARDS OF THE CHURCH**

**Section 1 – Offices, and Membership**

To hold office on a board of the Church, a person must be a Voting Member of Church as defined in Article VI, Section 1.D

No person shall hold a position on more than one board, with the following exceptions

1. Any board member may also hold a position on the Cabinet or Board of Pastoral Relations.
2. Any board member may also hold a position on any ad hoc board, such as

the Pastoral Search Committee.

3. If approved by the Church Cabinet due to special circumstances

Members of the Boards shall be elected at the annual meeting by majority vote. The term of all offices is three years unless otherwise noted. The Nominating Committee prior to the annual meeting will make nominations to office. Additional nominations may be made from the floor of the annual meeting.

The members of each board except where otherwise designated shall choose the Chairperson of that Board.

**\*\* Each Board (The Nominating Committee) shall be responsible for filling all elected positions within their Board with the exception of Pastor and Associate Pastor as they become vacant.**

## **The Church Cabinet**

In accordance with the Purpose and Covenant of the Church as stated in Article III and Article IV the Cabinet visualizes and directs the purpose and work of the Church; Advises the pastor and the Leadership of the church on the general direction of the activities of the church and cooperate with them in the formulation of policy and fulfillment of a well-rounded program;

Shall consist of:

### Non-Voting Members:

1. Pastor
2. Associate Pastor

### Voting Members:

1. The Moderator
2. The Assistant Moderator
3. The Clerk
4. The Treasurer
5. The Public Relations Coordinator or Designee
6. **\*\*The Nominating Committee or Designee – Delete**
7. The Board of Finance and Property Chairperson or Designee
8. The Board of Trustee Chairperson or Designee
9. The Board of Stewards Chairperson or Designee
10. The Board of Deacons Chairperson or Designee
11. The Board of Christian Education Chairperson or Designee
12. The Board of Outreach Chairperson or Designee
13. The Board of Pastoral Relations Chairperson or Designee

## **\*\* Nominating Committee – Delete**

It is the responsibility of the Nominating Committee, to screen and recommend people for nomination, who are willing to serve on the various boards of the Church, and abide by the Purpose and Covenant of the Church as stated in Article III and Article IV, for all vacant positions of the various Church Boards.

Shall consist of a total of four (4) members. Three members from the congregation and the fourth is the Pastor. One member's term will expire each

year. One member of the Nominating committee will be elected annually from nominations made by the Church Cabinet or from nominations at the Annual Meeting.

- **BUDGET** (please see appendix)

## CHURCH COMMITTEE MEMBERS 2008

### Administrative Board – Each Position is for 3 years

Position	Name	Term Expires
Moderator	*	Ann Mtg 2010
Assistant Moderator	Eddie Whitcomb	Ann Mtg 2010
Clerk	Peter Cook	Ann Mtg 2010
Publicity Chair	Jennifer Wylie	Ann Mtg 2010

### Board of Finance & Property (Total of 16 Members)

#### Trustees (Total of 3 Members) (Each Position is for 3 years)

Position	Name	Term Expires
Trustee	Chuck Bunker	Ann Mtg 2009
Trustee	Russell Garside	Ann Mtg 2010
Trustee	Clarence Farwell	Ann Mtg 2011

#### Finance (Total of 6 Members; Each Position is for 3 years)

Position	Name	Term Expires
Finance Member	John King	Ann Mtg 2009
Finance Member	Chris Hegarty	Ann Mtg 2009
Finance Member	*	Ann Mtg 2010
Treasurer	Rena Duncklee	Ann Mtg 2009
Assistant Treasurer	Dorothy Haight	Ann Mtg 2009
Auditor	*	

#### Stewards (Total of 7 Members; 2 Elected for 2 Years each)

Position	Name	Term Expires
Steward	Amy Fessenden	Ann Mtg 2009
Steward	Bruce Garvin	Ann Mtg 2010
Trustee Representative	TBD by Board of Finance & Property	
Finance Representative	TBD by Board of Finance & Property	
Deacon Representative	TBD by Board of Deacons	
Christian Education Representative	TBD by Board of CE	
Outreach Representative	TBD by Board of Outreach	

## CHURCH COMMITTEE MEMBERS 2008

### Board of Deacons (Total of 9 Members) (Each Position is for 3 years)

Position	Name	Term Expires
Deacon	Allison Ferrell	Ann Mtg 2009
Deacon	Barbara Haskell-Higgins	Ann Mtg 2009
Deacon	Art Fenske	Ann Mtg 2009
Deacon	Russell Haight	Ann Mtg 2010
Deacon	Todd Miller	Ann Mtg 2010
Deacon	Vicki Goodwin	Ann Mtg 2010
Deacon	Jeff Cleghorn	Ann Mtg 2011
Deacon	Amy Fessenden	Ann Mtg 2011
Deacon	Keith Baron	Ann Mtg 2011
Junior Deacon	Erin Saari	
Junior Deacon	Laura Desrochers	

### Board of Christian Education - Filled by Christian Ed Board

Position	Name	Term Expires
Director of Christian Education	Ann Desrochers	
Administrator	Amy Razzaboni	Jul1 2007 -Jun 2008
Children's Area Coordinator	*	Jul1 2007 -Jun 2008
Adult Area Coordinator	Lyndon Marble	Jul1 2007 -Jun 2008
Youth Area Coordinator	Joyce Hegarty	Jul1 2007 -Jun 2008
Vacation Bible School	Lynne Ouellette	Jul1 2007 -Jun 2008
Intergenerational Worship	Linda Saari	Jul1 2007 -Jun 2008
Librarian	Howard Clements	Jul1 2007 -Jun 2008
Member-at-Large	David Hoffman	Jul1 2007 -Jun 2008
Cradle Roll	Christine Clements	Jul1 2007 -Jun 2008

### Board of Outreach (Total of 6 Members) (Each Position is for 3 years)

Position	Name	Term Expires
Member	Sandy Garvin	Ann Mtg 2009
Member	Jackie Knowles	Ann Mtg 2009
Member	Nancy Dulac	Ann Mtg 2010
Member	Jennifer Wylie	Ann Mtg 2010
Member	Nancy Dunbar	Ann Mtg 2011
Member	Linda Ashton	Ann Mtg 2011

### Board of Pastoral Relations (Total of 3 Members) (each Position is for 2 years)

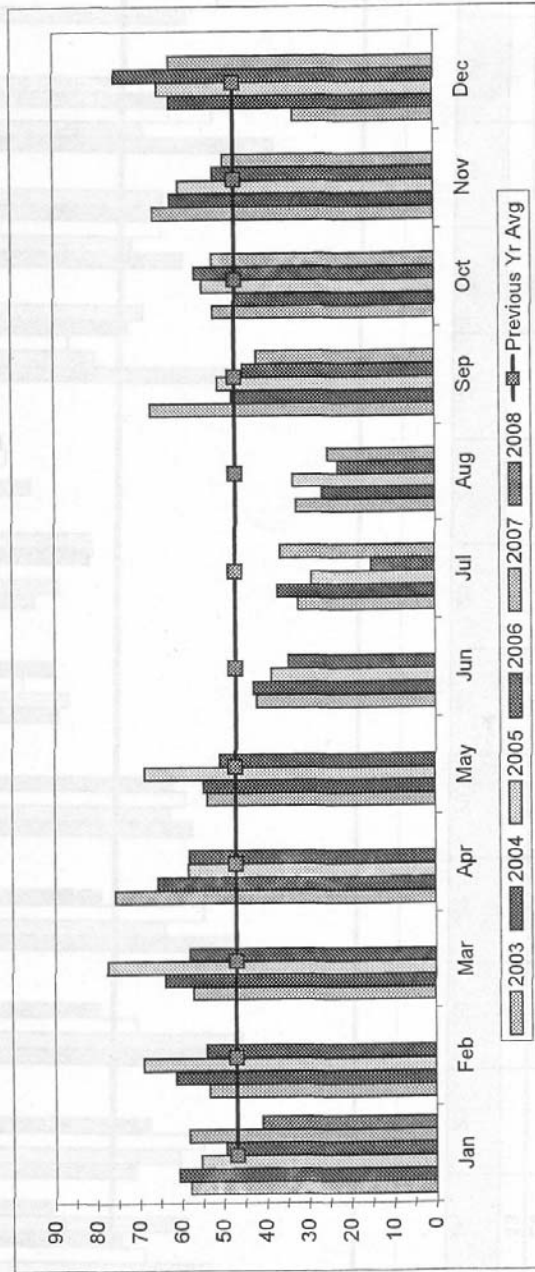
Position	Name	Term Expires
Assistant Moderator (Chairman)	Eddie Whitcomb	
Member	Melanie Levesque	Ann Mtg 2009
Member	Peter Cook	Ann Mtg 2010
Pastor	Rev. David Smith	

## CHURCH COMMITTEE MEMBERS 2008

### New Hampshire Annual Conference Delegates (Total of 4) 1 Yr Term)

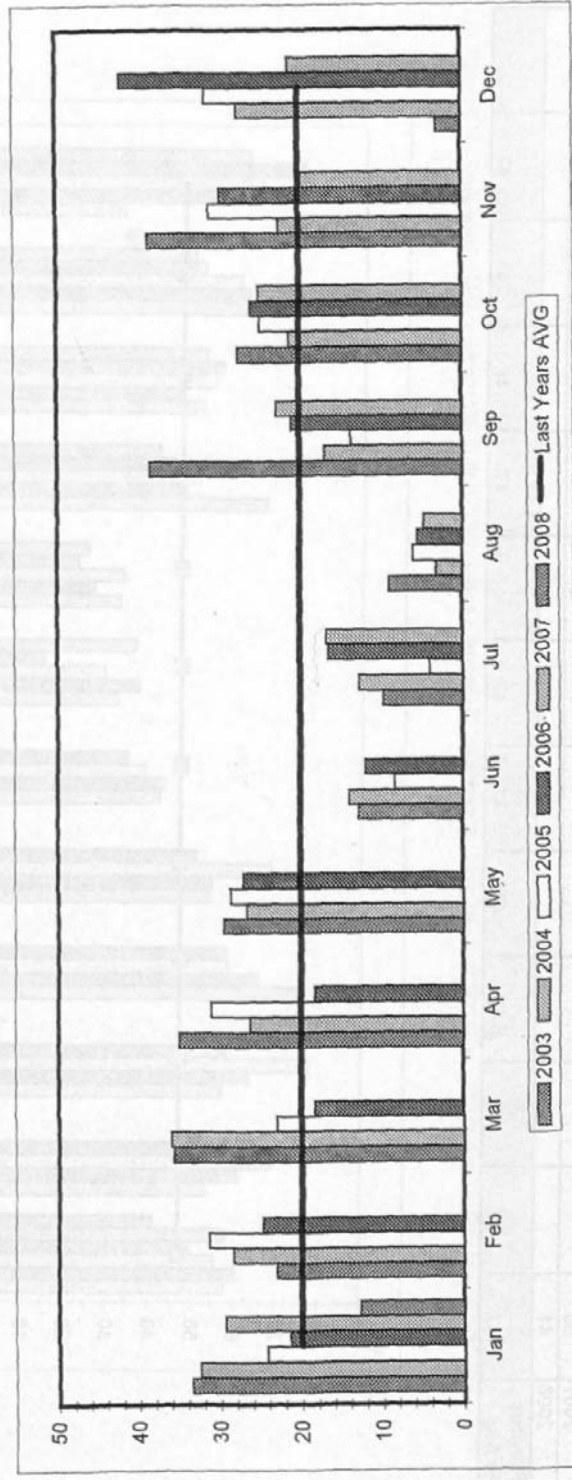
<b>Position</b>	<b>Name</b>	<b>Term Expires</b>
UCC Delegate	*	Ann Mtg 2009
UCC Delegate	Rev. David Smith	Ann Mtg 2009
UMC Lay Member	*	Ann Mtg 2009
UMC Alt Lay Member	Rev. David Smith	Ann Mtg 2009

	Jan	Feb	Mar	Apr	May	Jun	Jul	Aug	Sep	Oct	Nov	Dec	Monthly Avg. YTD
2002	75	49	60	29	40	34	24	35	58	80	69	62	51
2003	58	53	57	76	54	42	32	33	67	52	66	33	52
2004	61	61	64	66	55	43	37	27	48	47	62	62	53
2005	56	69	78	58	69	39	29	34	51	55	60	65	55
2006	50	54	58	58	51	35	15	23	45	57	52	75	48
2007	58					36		25	42	52	50	62	47
2008	41												
Previous Yr Avg	47	47	47	47	47	47	47	47	47	47	47	47	47



Church Attendance.xls - Adult

	Jan	Feb	Mar	Apr	May	Jun	Jul	Aug	Sep	Oct	Nov	Dec	Monthly Avg
2002	45	13	35	40	16	8	4	7	30	49	34		25
2003	34	23	36	35	30	13	10	9	39	28	3	3	25
2004	33	28	36	26	27	14	13	3	17	21	23	28	22
2005	24	31	23	31	29	8	4	6	14	25	31	32	21
2006	21	25	18	18	27	12	17	6	21	26	30	42	22
2007	29						17	5	23	25	20	21	20
2008	13												13
Previous Yr Avg	20	20	20	20	20	20	20	20	20	20	20	20	



Church Attendance.xls - Youth